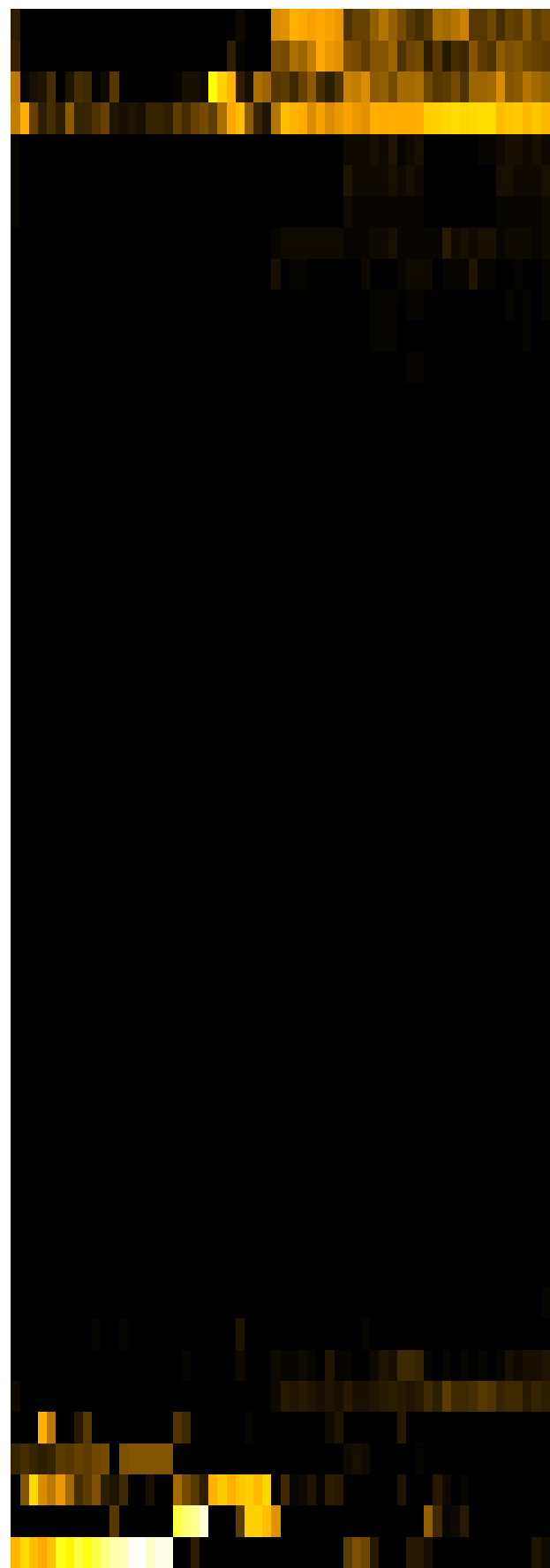
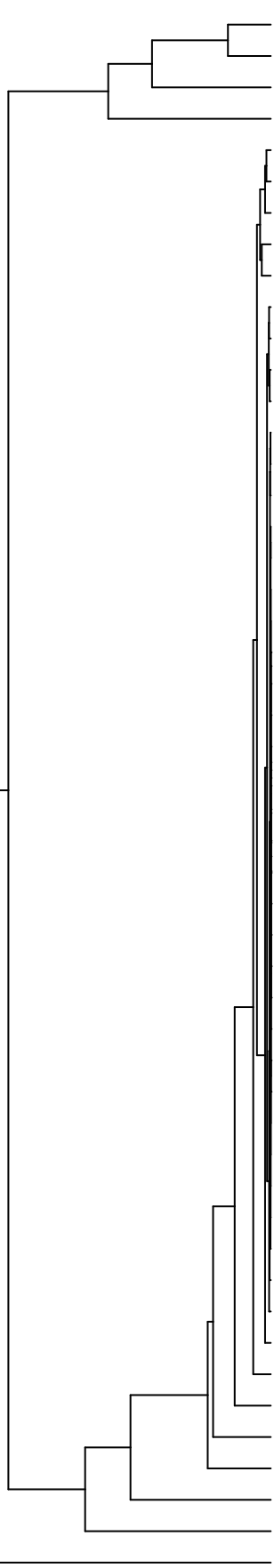


Group006

- G Final -PMA
- B Final -PMA



Veillonella

Haemophilus

Neisseria

Streptococcus

Eikenella

Aggregatibacter

Gemella

Schaalia

Rothia

Campylobacter

Porphyromonas

Leptotrichia

Prevotella

Alloprevotella

Solobacterium

Stomatobaculum

Lancefieldella

Lachnoanaerobaculum

Saccharibacteria\_(TM7)\_[G-6]

Oribacterium

Phyllobacterium

Capnocytophaga

Agrobacterium

Lachnospiraceae\_[G-2]

Acidovorax

Serratia

Novosphingobium

Leifsonia

Sphingobium

Riemerella

Microbacterium

Siccationidurans

Saccharibacteria\_(TM7)\_[G-5]

Cutibacterium

Acinetobacter

Absconditabacteria\_(SR1)\_[G-1]

Catonella

Lautropia

Saccharibacteria\_(TM7)\_[G-1]

Delftia

Actinomyces

Pseudomonas

Staphylococcus

Fusobacterium

Granulicatella

Raoultella

Salmonella

Klebsiella

Enterobacter

Citrobacter

F28914.S081

F28914.S442

F28914.S446

F28914.S408

F28914.S447

F28914.S444

F28914.S405

F28914.S401

F28914.S404

F28914.S561

F28914.S565

F28914.S597

F28914.S567

F28914.S562

F28914.S563

F28914.S247

F28914.S246

F28914.S245

F28914.S242

F28914.S085

F28914.S088

F28914.S084

F28914.S124

F28914.S283

F28914.S288

F28914.S286

F28914.S282

F28914.S125

F28914.S127

F28914.S126

Samples

Genus